

IMPORTANT: PLEASE KEEP FOR FUTURE REFERENCE.  
READ THE INSTRUCTIONS CAREFULLY!



Congratulations on acquiring your new **Swinging Branch®**. We're convinced your child will enjoy it. However, should this **Swinging Branch®** not live up to your expectations, do not hesitate to let us know.

Before assembling the hanging cradle, please check if you have **all the parts** listed below:

- a 'rectangular' wall plate
- the 'branch'
- 1 shackle
- 3 bolts, 3 sleeve nuts, 3 flush rings, 1 imbus key
- 6 long screw bolts, 6 plugs, 6 rings, 6 caps

**Tools** you will need:

- a drill
- spirit level (if available)
- flatheaded screwdriver
- 5 mm carpentry drill bit
- 8mm masonry drill (soft walls) or 8,5mm (hard walls)
- M10 socket wrench.

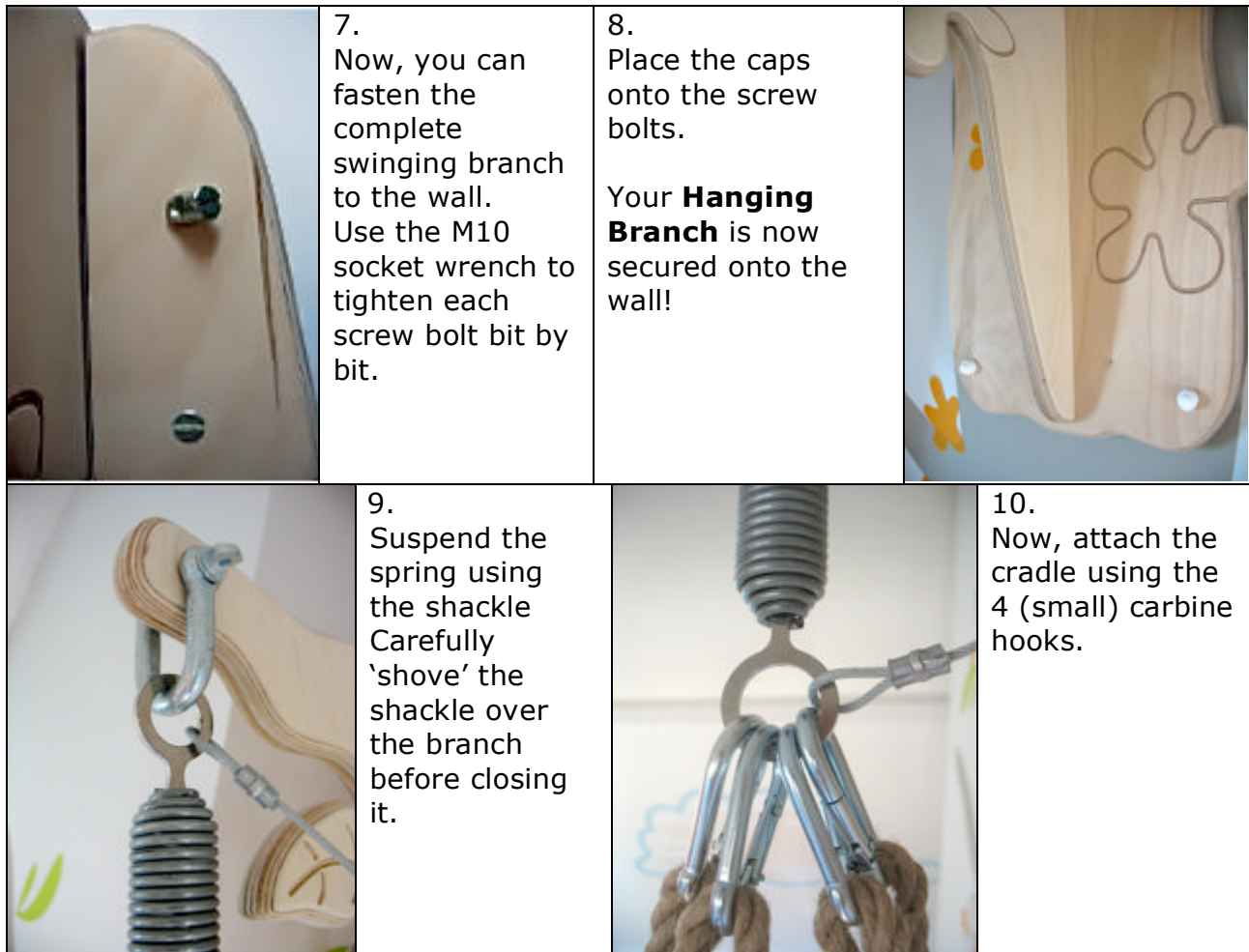
**Warning!**

Please read the product conditions prior to use on [www.hangingcradle.com](http://www.hangingcradle.com)  
The **Swinging Branch®** can **only** be used for suspending the Kindekeklein hanging cradle holding no more than 10 kilos (even though it has been tested for weight up to 75 kilos). Do **not** let children play with the hanging cradle or **Swinging Branch®**.

IMPORTANT: PLEASE KEEP FOR FUTURE REFERENCE.  
 READ THE INSTRUCTIONS CAREFULLY!

<p>1. Determine the position of the wall plate on your wall. The top of the wall-plate should be placed at 2.40 metres from the floor.</p>		<p>2. The <u>topside</u> of the wall plate is recognisable by 6 predrilled holes. Ensure that the wall plate is horizontal using a spirit level (or your carpenter's 'eye').</p>	<p>3. Press the plate against the wall and mark the <b>4</b> openings (upper half) and <b>2</b> openings (lower half) for the wall plugs by drilling briefly into your wall through the predrilled openings using a 5mm (carpentry) drill. Do <b>not drill</b> through the <b>3</b> openings in the <b>middle</b>: they are for attaching the swinging branch..</p>
<p>4. Drill the 6 holes using an 8 mm masonry drill bit (or an 8,5 mm drill if your walls are hard). Drill openings that are slightly longer than the plugs. Then, push the plugs into the wall. You might have to tap the (wider) end into the wall using a (small) hammer.</p>			
<p>5. Place the wall plate over the holes. Screw the large screw bolts through the plate and into the plugs. Look behind the plate to 'aim' for the plugs. When you are certain all 6 screwbolts are aimed correctly for the plug holes, <b>take the wall plate down</b>.</p>		<p>6. Attach the 'branch' to the wall plate as shown in the next <b>two</b> images.</p>	

IMPORTANT: PLEASE KEEP FOR FUTURE REFERENCE.  
READ THE INSTRUCTIONS CAREFULLY!



Your **Swinging Branch®** is ready for use!  
We wish you and your baby many enjoyable sleeping moments.

*P.S. Your experience and photographs of the Kindekeklein hanging cradle are more than welcome! Send them  
To: [andreas@hanging-cradle.com](mailto:andreas@hanging-cradle.com)  
They may very well end up on our website*